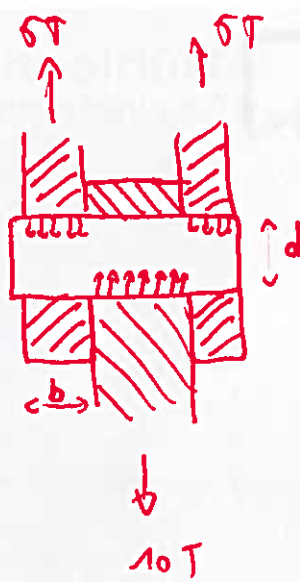



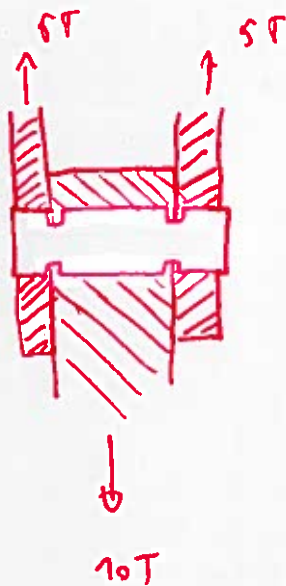
(A)



- τ_a (bij overgangen) = $\frac{F}{A} = \frac{5T}{\pi r^2}$
- τ_s (specifiek draad over lengte) = $\frac{F}{b \cdot d}$
- Circulair effect? 

Totale spanning = ... ?
($\tau_a + \tau_s + \dots$??)

(B)



- τ_a (bij overgangsvlakken) = $\frac{F}{A}$
- τ_s (over volledige lengte, behalve bij de overgangsvlakken ?)
- Circulair effect? factor ?

Totale spanning = ... ?