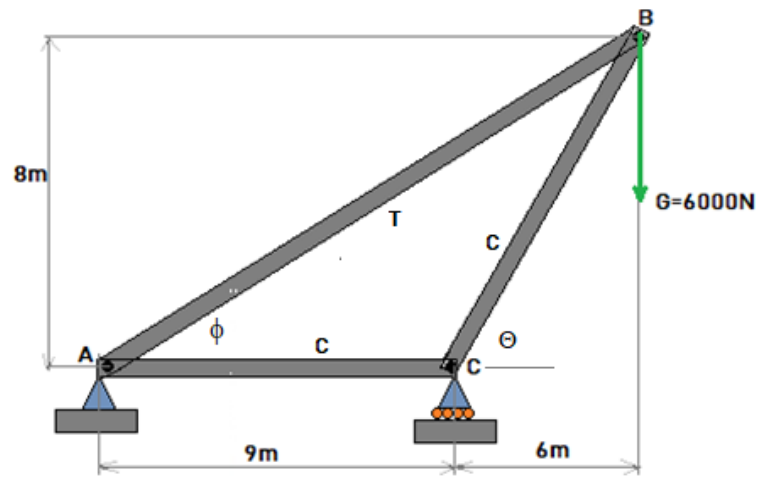


$$6000 \cdot (15) = 9FC$$

$$FC = 10000N$$

$$FA = -4000N$$



$$\Theta = 53,13^\circ$$

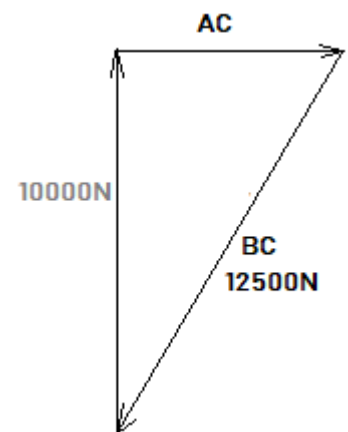
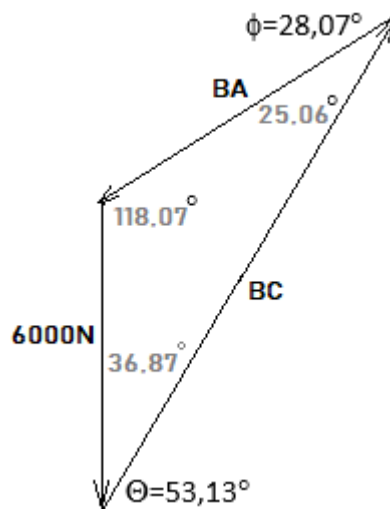
$$\phi = 28,07^\circ$$

$$\frac{6000}{\sin 25,06^\circ} = \frac{BA}{\sin 36,87^\circ} = \frac{BC}{\sin 118,07^\circ}$$

$$BA = 8500N (T)$$

$$BC = 12500N (C)$$

$$AC = 7500N (C)$$



Relatie tussen staafengte en kracht

$$\frac{12500}{10} = \frac{10000}{8} = \frac{7500}{6}$$

